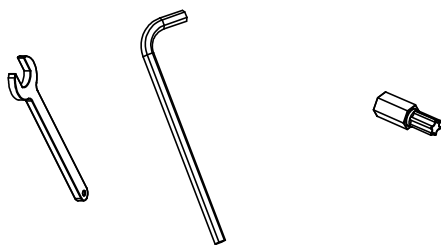
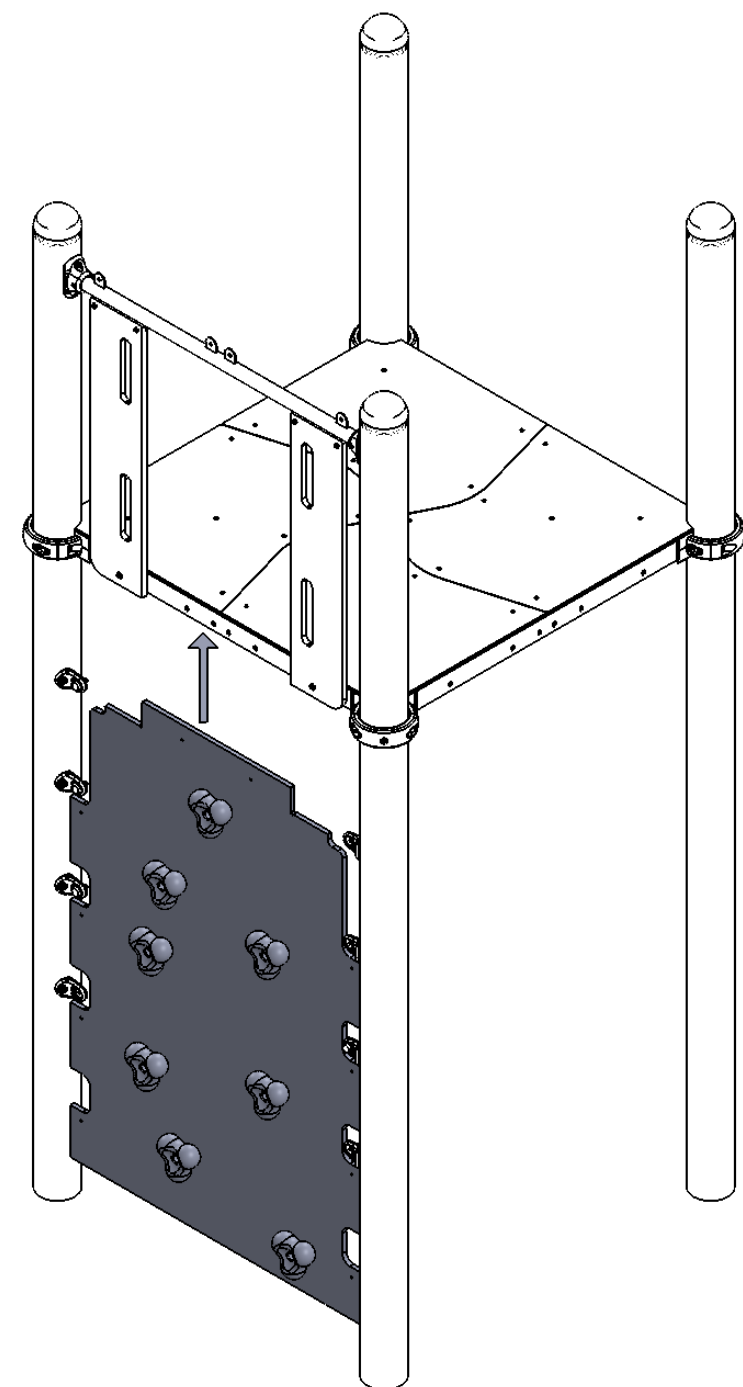


INST_12_53



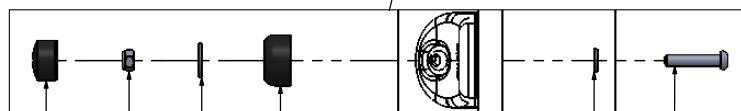
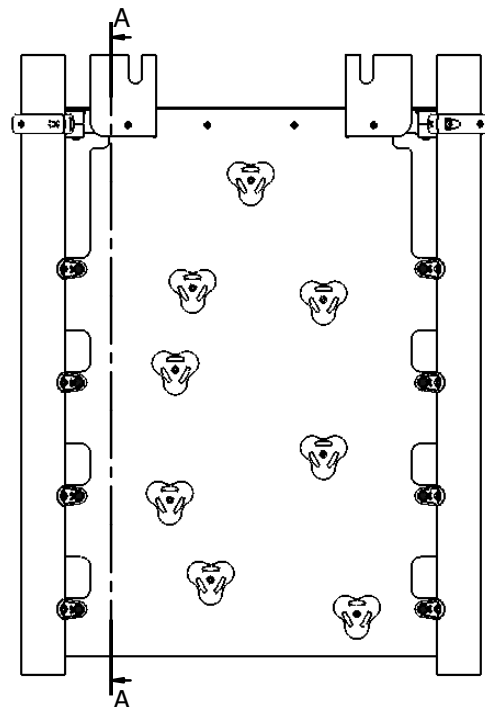
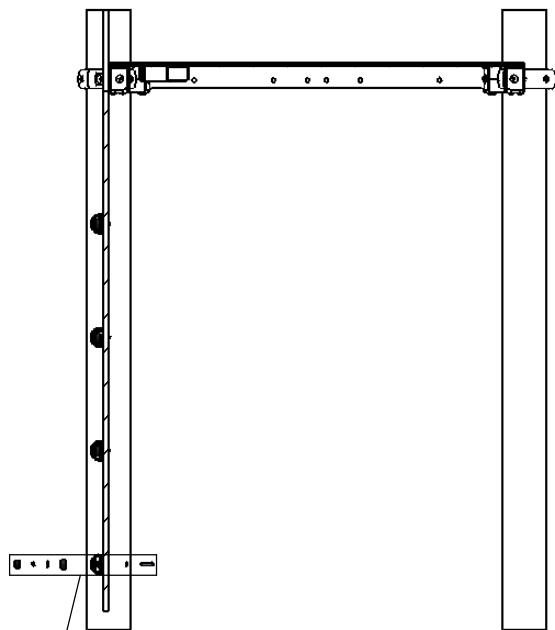
Nr. 10 Nr. 4 Nr. T30



Nr	Σ	Element		
2	2		-	W6x60
10	8		DIN 9021	6x18
15	8		ISO 7380	M6x30
16	8		-	K1_d21_B
17	8		-	Z1_d21_B
18	8		DIN 985	M6
21	2		DIN 125	8x16
22	8		DIN 125	6x12
58	1		-	LOCTITE
139	2		DIN 7991	M6x16
147	2		-	M6x10

2

A-A



17

18

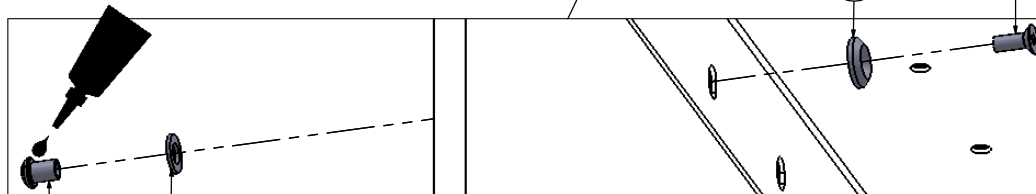
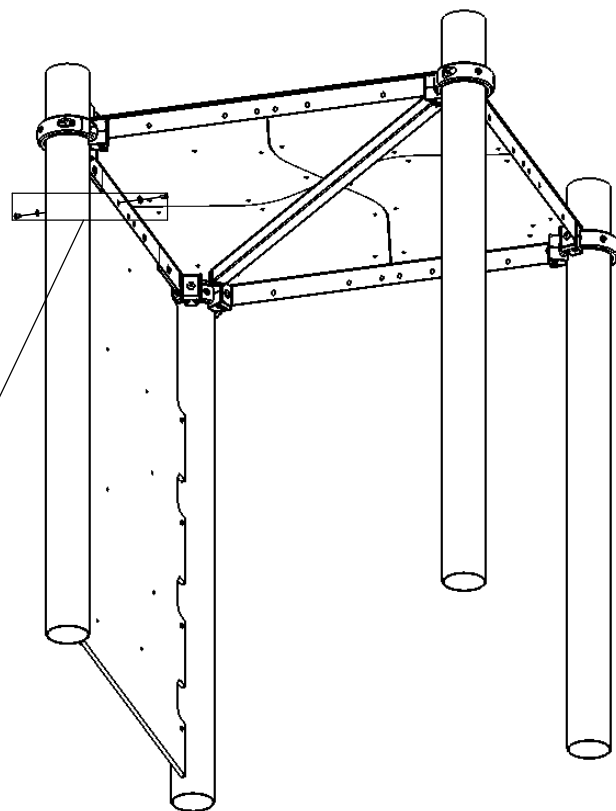
10

16

22

15

3



147

21

2

139